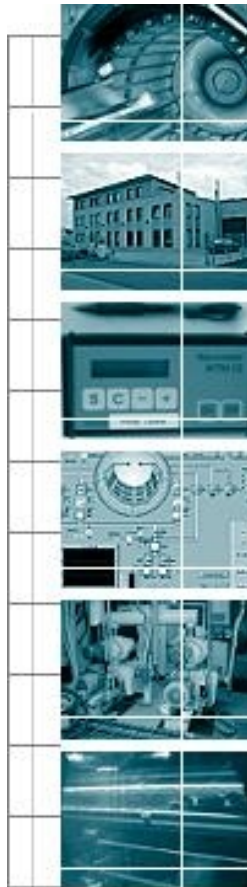


- Optical Coating
- Software development
- Special plants
- Retrofit
- Maintenance of plants



The company HILBERG & PARTNER is a successful specialist in the field of vacuum and plant technology as well as the planning, constructing and manufacturing of vacuum- technical plants of various ranges of application. Extensive consulting and first class services are guaranteed.

Specialist for vacuum and plant technology for more than 20 years



Hilberg & Partner GmbH
Keltenstrasse 16
D-63486 Bruchkoebel

Phone: +49- (0)6181 / 990536
Fax: +49- (0)6181 / 81591

eMail: info@hilberg-vakuumtechnik.de
<http://www.hilberg-vakuumtechnik.de>

Managing Director: Reinhold Hilberg

Integrated Engineering

Control system
for web coating plants

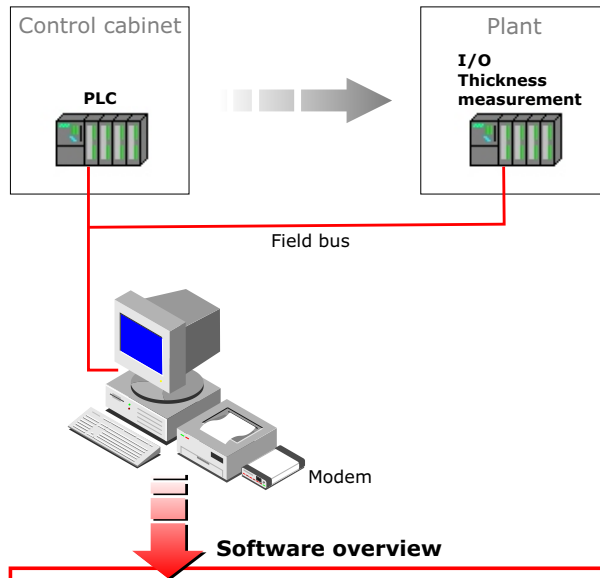


- Digital winding and drive system
- Automatic control of the layer thickness system
- Adaptable to individual customer needs and wishes
- Quality control
- Process data and event acquisition in data bases

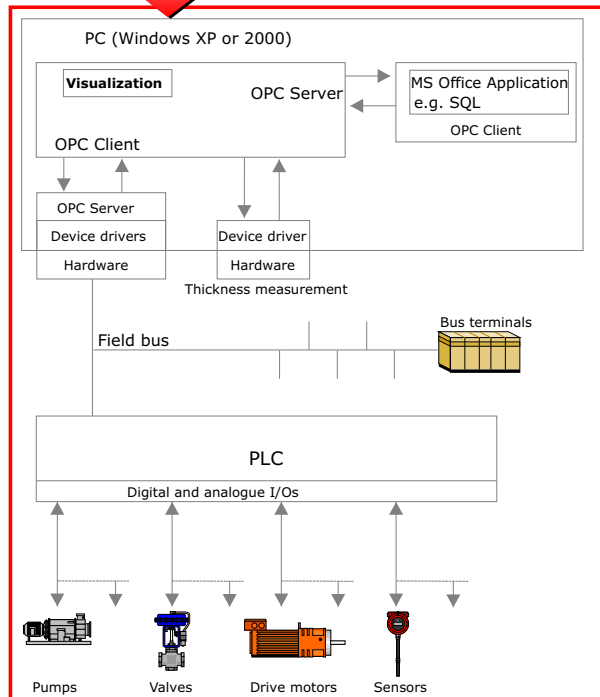
LayWeb® is a control system that we developed for the individual needs of the modern web coaters.

This control system is universally adaptable for the upgrading of the plants of all well-known manufacturers.

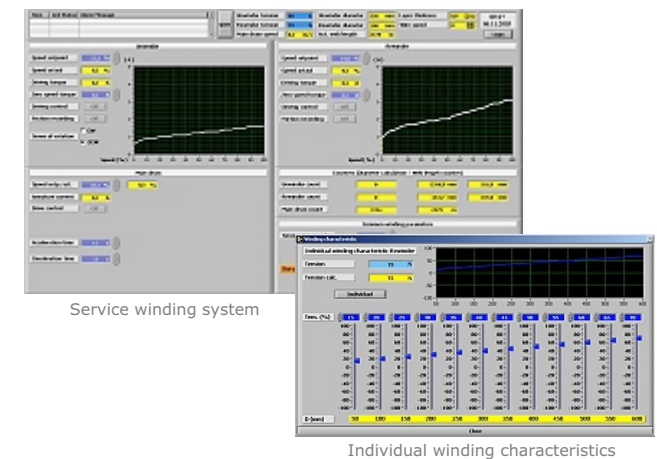
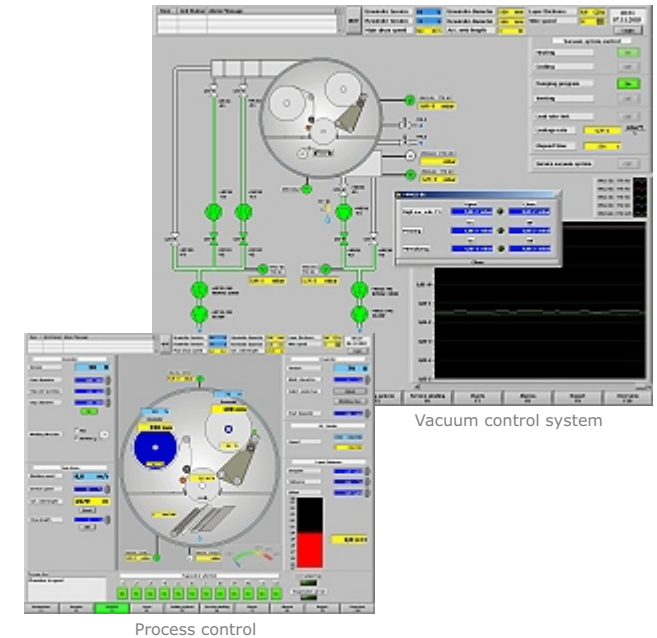
Hardware overview



Software overview



- Recipe management:**
 Simple editing of process steps and its management as well as archiving
- Process description:**
 All process parameters are displayed and monitored online
- Winding system:**
 The drive parameters are displayed online. All drive systems can be tested individually in service mode.
- Pump system control:**
 Automatic vacuum control and operation of the vacuum components
- Thickness measurement:**
 Online deposition control and its regulation
 Display of parameters as oscilloscope function
- Online diagrams:**
 Display of freely editable parameters as oscilloscope functions and archiving in data bases
 >> Quality control
- Alarm handling:**
 Display of current alarms and its recording in long-term archives



All process parameters are archived and can be displayed in a diagram picture.